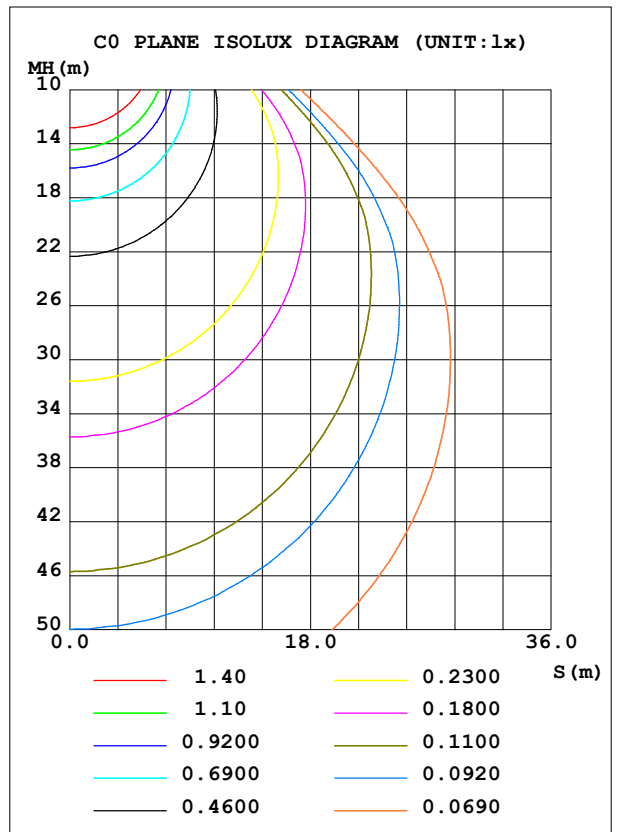
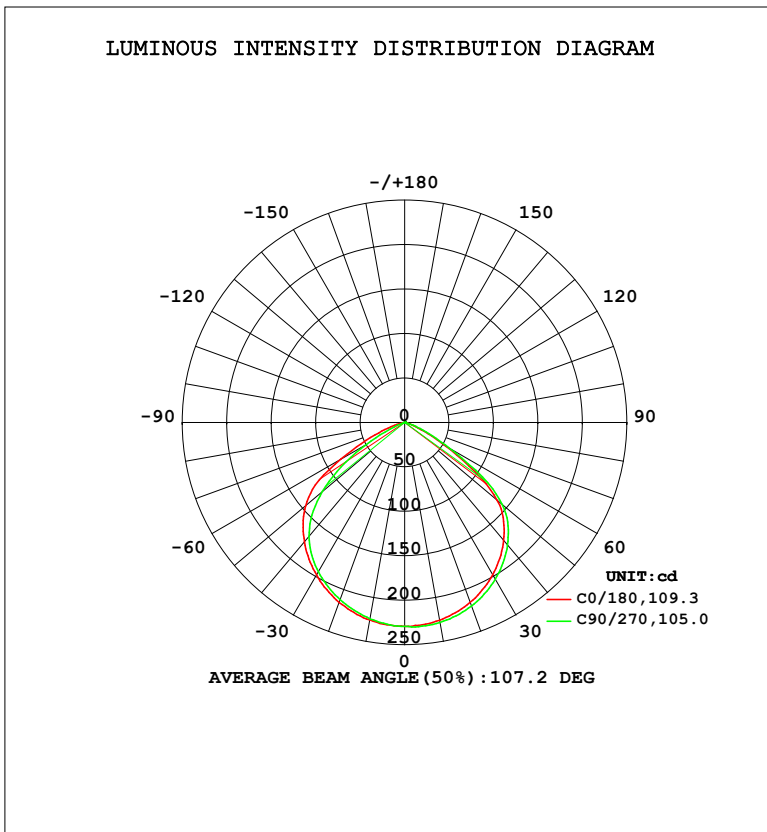


LUMINAIRE PHOTOMETRIC TEST REPORT

Test:U:120.1V I:0.0811A P:8.778W PF:0.9011 Freq:60.01Hz Lamp Flux:550.442x1 lm		
NAME: LRS-O2-MCT-BR 5000K	TYPE:	WEIGHT:
SPEC.:	DIM.:	SERIAL No.:
MFR.: FOSHAN LEDKEY LIGHTING CO.,LTD.	SUR.:	Shielding Angle:

DATA OF LAMP		PHOTOMETRIC DATA				Eff: 62.71 lm/W
MODEL		I _{max} (cd)	230.3	S/MH (C0/180)		1.29
NOMINAL POWER (W)		LOR (%)	100.0	S/MH (C90/270)		1.26
RATED VOLTAGE (V)	120	TOTAL FLUX (lm)	550.44	η UP, DN (C0-180)		0.0, 50.4
NOMINAL FLUX (lm)	550.442	CIE CLASS	DIRECT	η UP, DN (C180-360)		0.1, 49.5
LAMPS INSIDE	1	η up (%)	0.1	CIBSE SHR NOM		1.25
TEST VOLTAGE (V)	120	η down (%)	99.9	CIBSE SHR MAX		1.35



C Range: 0 - 360DEG
 C Interval: 22.5DEG
 Test Speed: HIGH
 Temperature: 25.2 °C
 Operators: Dano
 Test Date: 2023-07-07

γ Range: 0 - 180DEG
 γ Interval: 1.0DEG
 Test System: EVERFINE GO-R5000_V2 SYSTEM V2.00.459
 Humidity: 55.3%
 Test Distance: 2.900m [K=0.8810]
 Remarks:

ZONAL FLUX DIAGRAM

ZONAL FLUX DIAGRAM:

γ	C0	C45	C90	C135	C180	C225	C270	C315	γ	Φ zone	Φ total	%lum, lamp
10	225.9	227.2	228.6	227.4	225.6	224.1	224.3	224.0	0- 10	21.73	21.73	3.95,3.95
20	215.4	218.3	219.8	218.3	215.5	212.7	212.1	212.6	10- 20	62.59	84.32	15.3,15.3
30	198.0	202.0	203.7	202.3	198.1	195.3	194.1	195.0	20- 30	95.89	180.2	32.7,32.7
40	173.4	177.4	180.1	178.4	175.6	171.9	167.4	170.6	30- 40	117.3	297.5	54,54
50	135.5	138.6	143.0	145.4	145.6	140.0	120.8	135.8	40- 50	121.9	419.4	76.2,76.2
60	54.32	49.41	59.38	74.26	82.72	77.70	50.58	59.69	50- 60	92.32	511.7	93,93
70	10.16	10.79	13.42	16.63	23.86	15.68	0.8414	12.33	60- 70	33.66	545.4	99.1,99.1
80	0.0821	0.3023	0.5169	0.3261	0.0450	0.0438	0.1009	0.1253	70- 80	4.381	549.8	99.9,99.9
90	0.0068	0.1077	0.2216	0.0798	0.0030	0.0026	0.0047	0.0060	80- 90	0.1413	549.9	99.9,99.9
100	0.0119	0.0115	0.0047	0.0068	0.0226	0.0217	0.0243	0.0308	90-100	0.0187	549.9	99.9,99.9
110	0.0293	0.0269	0.0196	0.0209	0.0464	0.0438	0.0456	0.0533	100-110	0.0280	550.0	99.9,99.9
120	0.0582	0.0515	0.0440	0.0465	0.0613	0.0583	0.0542	0.0610	110-120	0.0443	550.0	99.9,99.9
130	0.0948	0.0869	0.0884	0.0874	0.0966	0.0910	0.0896	0.0935	120-130	0.0632	550.1	99.9,99.9
140	0.1293	0.1307	0.1314	0.1304	0.1640	0.1541	0.1467	0.1608	130-140	0.0896	550.2	99.9,99.9
150	0.1583	0.1486	0.1548	0.1539	0.2307	0.2145	0.2026	0.2162	140-150	0.1041	550.3	100,100
160	0.1698	0.1796	0.1877	0.1802	0.2596	0.2536	0.2457	0.2520	150-160	0.0930	550.4	100,100
170	0.1855	0.1864	0.1996	0.1965	0.2511	0.2443	0.2410	0.2481	160-170	0.0617	550.4	100,100
180	0.2282	0.2154	0.2300	0.2331	0.2277	0.2213	0.2236	0.2349	170-180	0.0211	550.4	100,100
DEG	LUMINOUS INTENSITY:cd									UNIT:lm		

Conical surface Flux(90deg): 359.2 lm

%lum = 65.3%

%lamp = 65.3%

Conical surface Flux(120deg): 511.74 lm

%lum = 93.0%

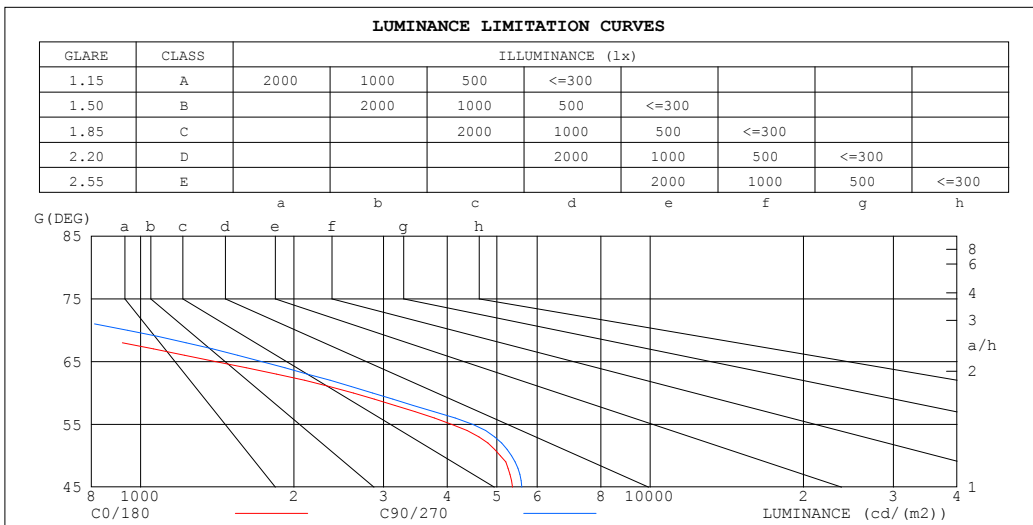
%lamp = 93.0%

C Range: 0 - 360DEG
 C Interval: 22.5DEG
 Test Speed: HIGH
 Temperature:25.2℃
 Operators:Dano
 Test Date:2023-07-07

γ Range: 0 - 180DEG
 γ Interval: 1.0DEG
 Test System:EVERFINE GO-R5000_V2 SYSTEM V2.00.459
 Humidity:55.3%
 Test Distance:2.900m [K=0.8810]
 Remarks:

LUMINANCE LIMITATION CURVES

Test:U:120.1V I:0.0811A P:8.778W PF:0.9011 Freq:60.01Hz Lamp Flux:550.442x1 lm		
NAME: LRS-O2-MCT-BR 5000K	TYPE:	WEIGHT:
SPEC.:	DIM.:	SERIAL No.:
MFR.: FOSHAN LEDKEY LIGHTING CO.,LTD.	SUR.:	Shielding Angle:



LUMINANCE cd/(m2)		
G (DEG)	C0/180	C90/270
85	16	109
80	11	72
75	232	273
70	716	943
65	1404	1731
60	2619	2855
55	4078	4491
50	5079	5347
45	5368	5598

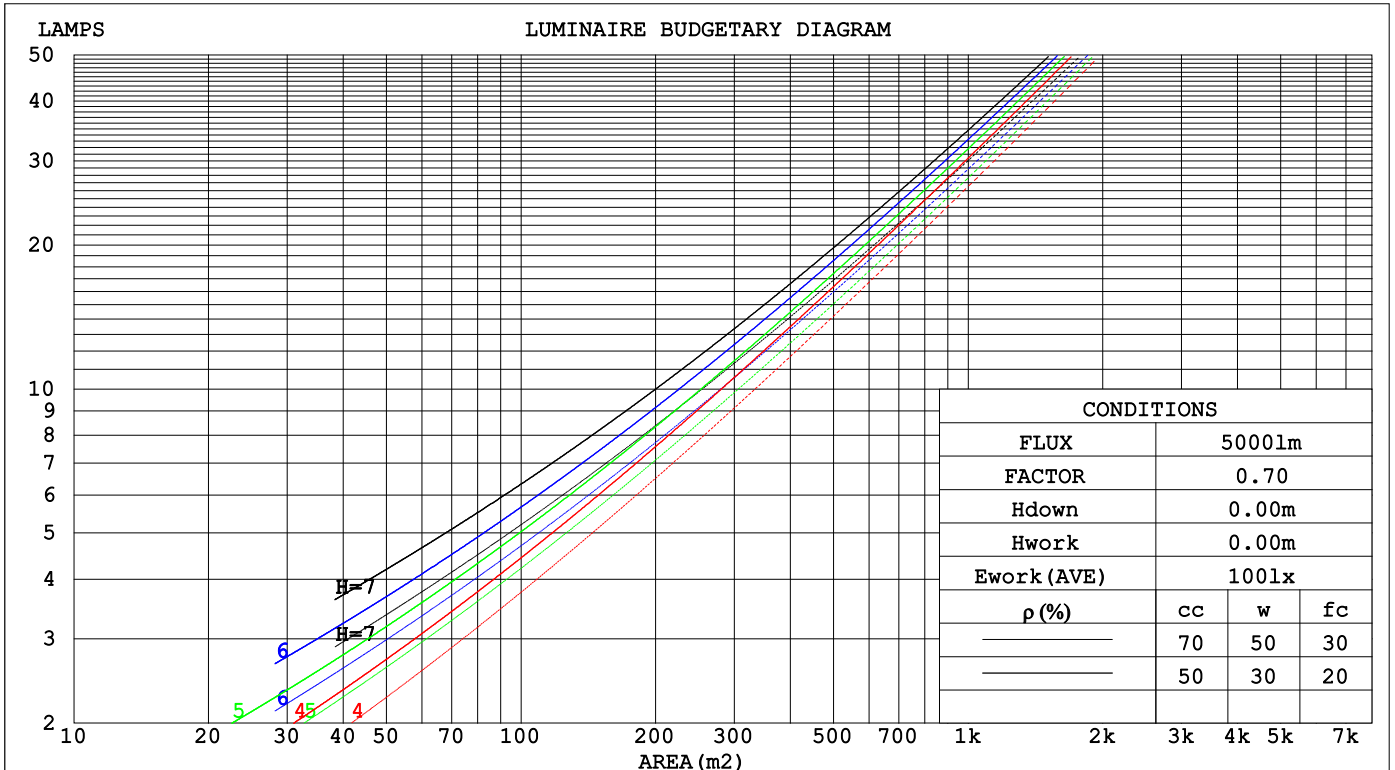
C Range: 0 - 360DEG
 C Interval: 22.5DEG
 Test Speed: HIGH
 Temperature: 25.2°C
 Operators: Dano
 Test Date: 2023-07-07

γ Range: 0 - 180DEG
 γ Interval: 1.0DEG
 Test System: EVERFINE GO-R5000_V2 SYSTEM V2.00.459
 Humidity: 55.3%
 Test Distance: 2.900m [K=0.8810]
 Remarks:

CU AND LUMINAIRE BUDGETARY ESTIMATE DIAGRAM

Test:U:120.1V I:0.0811A P:8.778W PF:0.9011 Freq:60.01Hz Lamp Flux:550.442x1 lm		
NAME: LRS-O2-MCT-BR 5000K	TYPE:	WEIGHT:
SPEC.:	DIM.:	SERIAL No.:
MFR.: FOSHAN LEDKEY LIGHTING CO.,LTD.	SUR.:	Shielding Angle:

pcc	30%			70%			50%			30%			10%			0
p _w	50%	30%	10%	50%	30%	10%	50%	30%	10%	50%	30%	10%	50%	30%	10%	0
p _{fc}	20%			20%			20%			20%			20%			0
RCR	RCR:Room Cavity Ratio						Coefficients of Utilization(CU)									
0.0	1.06	1.06	1.06	1.16	1.16	1.16	1.11	1.11	1.11	1.06	1.06	1.06	1.02	1.02	1.02	.00
1.0	.97	.95	.93	1.05	1.02	.99	1.01	.98	.96	.97	.95	.93	.94	.92	.90	.88
2.0	.87	.84	.80	.94	.89	.84	.90	.86	.82	.87	.84	.80	.84	.81	.79	.77
3.0	.78	.74	.70	.84	.77	.72	.81	.75	.71	.78	.74	.70	.76	.72	.68	.66
4.0	.70	.65	.61	.75	.68	.62	.73	.66	.61	.70	.65	.61	.68	.64	.60	.58
5.0	.64	.58	.53	.68	.60	.54	.66	.59	.54	.64	.58	.53	.62	.57	.53	.51
6.0	.58	.52	.47	.61	.53	.48	.59	.53	.47	.58	.52	.47	.56	.51	.47	.45
7.0	.53	.46	.42	.56	.48	.42	.54	.47	.42	.53	.46	.42	.51	.46	.42	.40
8.0	.48	.42	.38	.51	.43	.38	.50	.43	.38	.48	.42	.38	.47	.42	.37	.35
9.0	.45	.38	.34	.47	.39	.34	.46	.39	.34	.45	.38	.34	.44	.38	.34	.32
10.0	.41	.35	.31	.43	.36	.31	.42	.36	.31	.41	.35	.31	.40	.35	.31	.29



C Range: 0 - 360DEG
 C Interval: 22.5DEG
 Test Speed: HIGH
 Temperature:25.2°C
 Operators:Dano
 Test Date:2023-07-07

γ Range: 0 - 180DEG
 γ Interval: 1.0DEG
 Test System:EVERFINE GO-R5000_V2 SYSTEM V2.00.459
 Humidity:55.3%
 Test Distance:2.900m [K=0.8810]
 Remarks:

WEC AND CCEC

Test:U:120.1V I:0.0811A P:8.778W PF:0.9011 Freq:60.01Hz Lamp Flux:550.442x1 lm		
NAME: LRS-O2-MCT-BR 5000K	TYPE:	WEIGHT:
SPEC.:	DIM.:	SERIAL No.:
MFR.: FOSHAN LEDKEY LIGHTING CO.,LTD.	SUR.:	Shielding Angle:

ρcc	30%			70%			50%			30%			10%			0
ρw	50%	30%	10%	50%	30%	10%	50%	30%	10%	50%	30%	10%	50%	30%	10%	0
ρfc	20%			20%			20%			20%			20%			0
RCR	RCR:Room Cavity Ratio						Wall Exitance Coefficients(WEC)									
0.0																
1.0	.212	.122	.039	.237	.135	.043	.224	.129	.041	.212	.122	.039	.201	.117	.038	
2.0	.213	.120	.037	.235	.130	.040	.224	.125	.039	.213	.120	.037	.204	.115	.036	
3.0	.207	.113	.035	.226	.121	.036	.216	.117	.036	.207	.113	.035	.198	.110	.034	
4.0	.198	.106	.032	.215	.112	.033	.206	.109	.033	.198	.106	.032	.190	.103	.031	
5.0	.188	.099	.030	.203	.104	.030	.195	.102	.030	.188	.099	.030	.181	.097	.029	
6.0	.178	.093	.027	.192	.097	.028	.185	.095	.028	.178	.093	.027	.172	.091	.027	
7.0	.169	.087	.025	.181	.090	.026	.175	.088	.025	.169	.087	.025	.163	.085	.025	
8.0	.160	.081	.023	.171	.084	.024	.165	.083	.024	.160	.081	.023	.155	.080	.023	
9.0	.152	.076	.022	.162	.079	.022	.157	.077	.022	.152	.076	.022	.147	.075	.022	
10.0	.144	.072	.020	.153	.074	.021	.149	.073	.020	.144	.072	.020	.140	.070	.020	

ρcc	30%			70%			50%			30%			10%			0
ρw	50%	30%	10%	50%	30%	10%	50%	30%	10%	50%	30%	10%	50%	30%	10%	0
ρfc	20%			20%			20%			20%			20%			0
RCR	RCR:Room Cavity Ratio						Ceiling Cavity Exitance Coefficients(CCEC)									
0.0	.064	.064	.064	.163	.163	.163	.112	.112	.112	.064	.064	.064	.020	.020	.020	
1.0	.059	.054	.049	.151	.135	.121	.103	.093	.084	.059	.054	.049	.019	.017	.016	
2.0	.056	.046	.037	.142	.114	.091	.098	.079	.063	.056	.046	.037	.018	.015	.012	
3.0	.054	.040	.029	.135	.099	.070	.093	.069	.049	.054	.040	.029	.017	.013	.009	
4.0	.051	.036	.023	.129	.087	.055	.089	.061	.039	.051	.036	.023	.017	.012	.008	
5.0	.049	.032	.019	.123	.078	.045	.085	.055	.032	.049	.032	.019	.016	.010	.006	
6.0	.047	.029	.016	.118	.071	.037	.081	.050	.026	.047	.029	.016	.015	.010	.005	
7.0	.045	.027	.013	.112	.065	.031	.078	.046	.022	.045	.027	.013	.015	.009	.004	
8.0	.043	.025	.011	.107	.060	.027	.074	.042	.019	.043	.025	.011	.014	.008	.004	
9.0	.041	.023	.010	.103	.056	.024	.071	.039	.017	.041	.023	.010	.013	.008	.003	
10.0	.040	.022	.009	.098	.052	.021	.068	.037	.015	.040	.022	.009	.013	.007	.003	

C Range: 0 - 360DEG
 C Interval: 22.5DEG
 Test Speed: HIGH
 Temperature:25.2℃
 Operators:Dano
 Test Date:2023-07-07

γ Range: 0 - 180DEG
 γ Interval: 1.0DEG
 Test System:EVERFINE GO-R5000_V2 SYSTEM V2.00.459
 Humidity:55.3%
 Test Distance:2.900m [K=0.8810]
 Remarks:

UGR(Unified Glare Rating) Table

Test:U:120.1V I:0.0811A P:8.778W PF:0.9011 Freq:60.01Hz Lamp Flux:550.442x1 lm		
NAME: LRS-O2-MCT-BR 5000K	TYPE:	WEIGHT:
SPEC.:	DIM.:	SERIAL No.:
MFR.: FOSHAN LEDKEY LIGHTING CO.,LTD.	SUR.:	Shielding Angle:

ceiling/cavity	0.7	0.7	0.5	0.5	0.3	0.7	0.7	0.5	0.5	0.3
walls	0.5	0.3	0.5	0.3	0.3	0.5	0.3	0.5	0.3	0.3
working plane	0.2	0.2	0.2	0.2	0.2	0.2	0.2	0.2	0.2	0.2

Room dimensions	Viewed crosswise					Viewed endwise				
x = 2H y = 2H	17.2	18.6	17.5	18.8	19.0	17.5	18.9	17.8	19.1	19.3
3H	17.2	18.4	17.5	18.7	18.9	17.6	18.8	17.9	19.1	19.3
4H	17.1	18.3	17.4	18.5	18.8	17.5	18.7	17.8	18.9	19.2
6H	17.0	18.1	17.3	18.4	18.6	17.4	18.5	17.7	18.8	19.0
8H	16.9	18.0	17.3	18.3	18.6	17.3	18.4	17.7	18.7	19.0
12H	16.9	17.9	17.2	18.2	18.5	17.3	18.3	17.6	18.6	18.9
4H 2H	17.2	18.4	17.5	18.7	18.9	17.5	18.7	17.8	19.0	19.2
3H	17.2	18.2	17.6	18.5	18.8	17.6	18.6	17.9	18.9	19.2
4H	17.1	18.1	17.5	18.4	18.7	17.5	18.4	17.9	18.8	19.1
6H	17.0	17.9	17.4	18.2	18.6	17.4	18.2	17.8	18.6	18.9
8H	17.0	17.7	17.4	18.1	18.5	17.4	18.1	17.8	18.5	18.9
12H	17.0	17.6	17.4	18.0	18.4	17.3	18.0	17.8	18.4	18.8
8H 4H	17.0	17.8	17.4	18.1	18.5	17.4	18.1	17.8	18.5	18.9
6H	16.9	17.5	17.4	17.9	18.4	17.3	17.9	17.8	18.3	18.7
8H	16.9	17.4	17.3	17.8	18.3	17.3	17.8	17.7	18.2	18.7
12H	16.8	17.3	17.3	17.7	18.2	17.2	17.7	17.7	18.1	18.6
12H 4H	17.0	17.6	17.4	18.0	18.4	17.4	18.0	17.8	18.4	18.8
6H	16.9	17.4	17.3	17.8	18.3	17.3	17.8	17.7	18.2	18.7
8H	16.8	17.3	17.3	17.7	18.2	17.2	17.7	17.7	18.1	18.6

Variations with the observer position at spacings(CIE Pub.117):		
S = 1.0H	+ 0.8 / - 1.1	+ 0.7 / - 0.9
1.5H	+ 0.7 / - 1.4	+ 0.6 / - 1.3
2.0H	+ 2.2 / - 4.5	+ 2.2 / - 4.1

CIE Pub.117, 550.4 lm Total Lamp Luminous Flux Corrected (8log(F/F0) = -2.1)
Area: 0.041547 m2

C Range: 0 - 360DEG	γ Range: 0 - 180DEG
C Interval: 22.5DEG	γ Interval: 1.0DEG
Test Speed: HIGH	Test System:EVERFINE GO-R5000_V2 SYSTEM V2.00.459
Temperature:25.2℃	Humidity:55.3%
Operators:Dano	Test Distance:2.900m [K=0.8810]
Test Date:2023-07-07	Remarks:

UTILIZATION FACTORS TABLE

Test:U:120.1V I:0.0811A P:8.778W PF:0.9011 Freq:60.01Hz Lamp Flux:550.442x1 lm		
NAME: LRS-O2-MCT-BR 5000K	TYPE:	WEIGHT:
SPEC.:	DIM.:	SERIAL No.:
MFR.: FOSHAN LEDKEY LIGHTING CO.,LTD.	SUR.:	Shielding Angle:

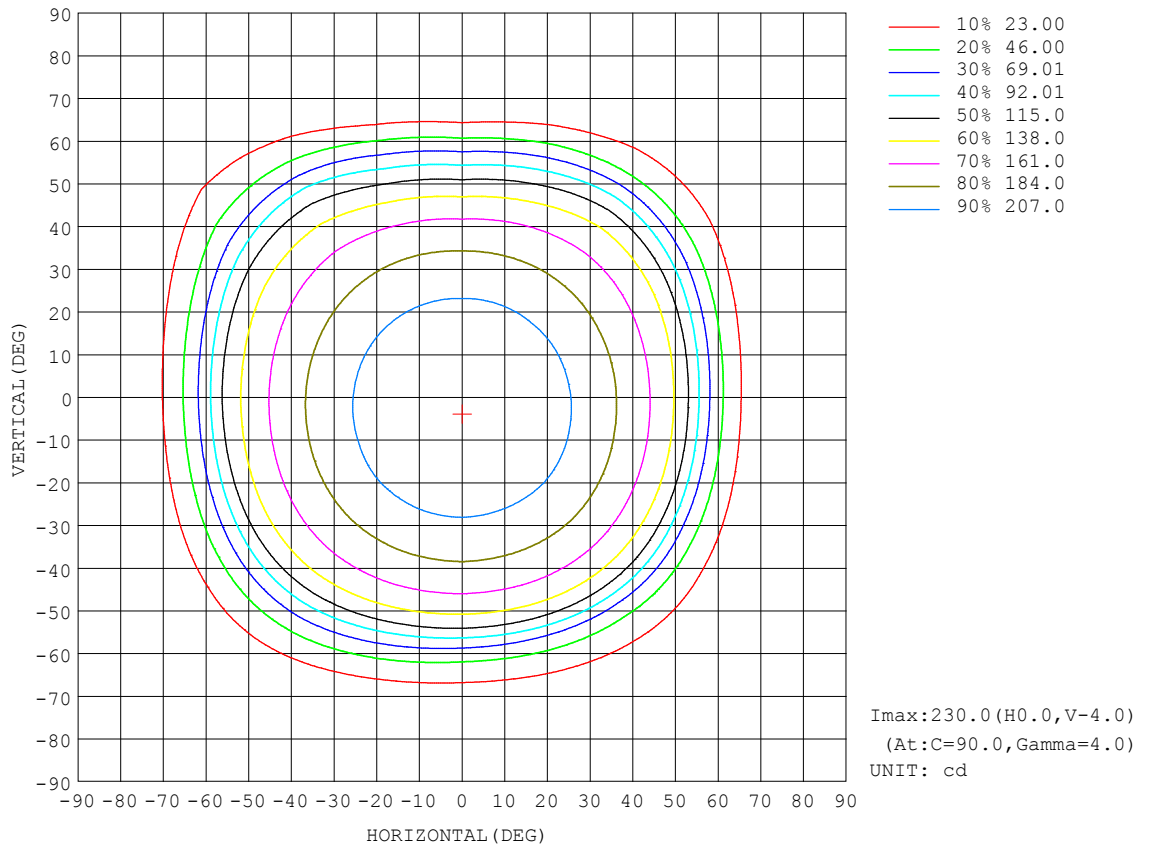
REFLECTANCE										
Ceiling	0.8	0.8	0.8	0.7	0.7	0.7	0.5	0.5	0.5	0
Walls	0.7	0.5	0.3	0.7	0.5	0.3	0.7	0.5	0.3	0
Working plane	0.2	0.2	0.2	0.2	0.2	0.2	0.2	0.2	0.2	0
ROOM INDEX	UTILIZATION FACTORS (PERCENT) $k(RI) \times RCR = 5$									
k = 0.60	62	51	44	61	51	44	60	50	44	38
0.80	73	62	56	72	62	56	70	61	55	49
1.00	82	72	66	81	72	66	79	73	65	59
1.25	89	80	74	88	80	74	85	78	73	67
1.50	94	86	80	92	85	79	90	83	78	72
2.00	100	93	88	98	92	87	95	90	86	79
2.50	103	97	92	101	96	91	98	93	89	82
3.00	106	101	96	104	99	95	100	96	93	85
4.00	109	105	101	107	103	99	103	100	97	89
5.00	111	107	104	109	105	102	104	102	99	90
ROOM INDEX	UF(total)									Direct
According to DIN EN 13032-2 2004			Suspended				SHRNOM = 1.25			

C Range: 0 - 360DEG
 C Interval: 22.5DEG
 Test Speed: HIGH
 Temperature:25.2℃
 Operators:Dano
 Test Date:2023-07-07

γ Range: 0 - 180DEG
 γ Interval: 1.0DEG
 Test System:EVERFINE GO-R5000_V2 SYSTEM V2.00.459
 Humidity:55.3%
 Test Distance:2.900m [K=0.8810]
 Remarks:

ISOCANDELA DIAGRAM

Test:U:120.1V I:0.0811A P:8.778W PF:0.9011 Freq:60.01Hz Lamp Flux:550.442x1 lm		
NAME: LRS-O2-MCT-BR 5000K	TYPE:	WEIGHT:
SPEC.:	DIM.:	SERIAL No.:
MFR.: FOSHAN LEDKEY LIGHTING CO.,LTD.	SUR.:	Shielding Angle:



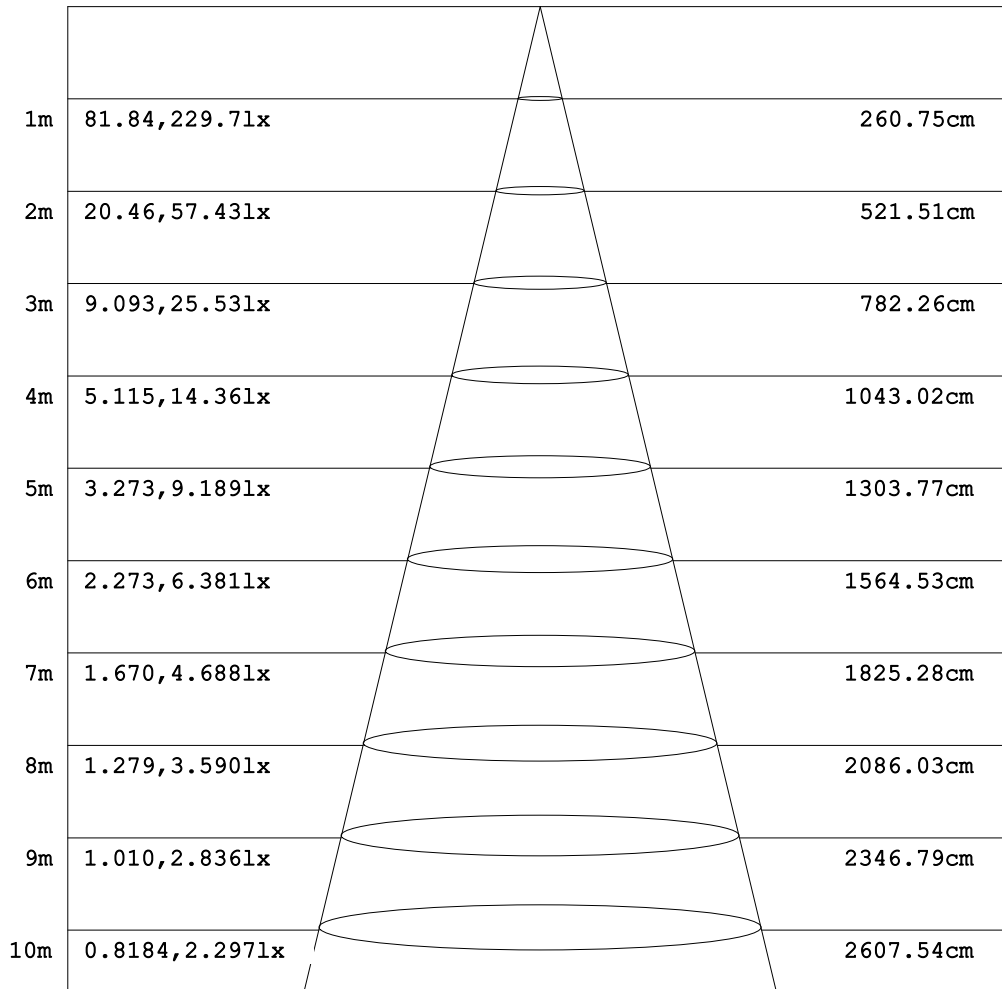
C Range: 0 - 360DEG
 C Interval: 22.5DEG
 Test Speed: HIGH
 Temperature:25.2℃
 Operators:Dano
 Test Date:2023-07-07

γ Range: 0 - 180DEG
 γ Interval: 1.0DEG
 Test System:EVERFINE GO-R5000_V2 SYSTEM V2.00.459
 Humidity:55.3%
 Test Distance:2.900m [K=0.8810]
 Remarks:

AAI Figure

Test:U:120.1V I:0.0811A P:8.778W PF:0.9011 Freq:60.01Hz Lamp Flux:550.442x1 lm		
NAME: LRS-O2-MCT-BR 5000K	TYPE:	WEIGHT:
SPEC.:	DIM.:	SERIAL No.:
MFR.: FOSHAN LEDKEY LIGHTING CO.,LTD.	SUR.:	Shielding Angle:

Flux out:452.8 lm



Height Eavg, Emax Angle:105.02deg Diameter

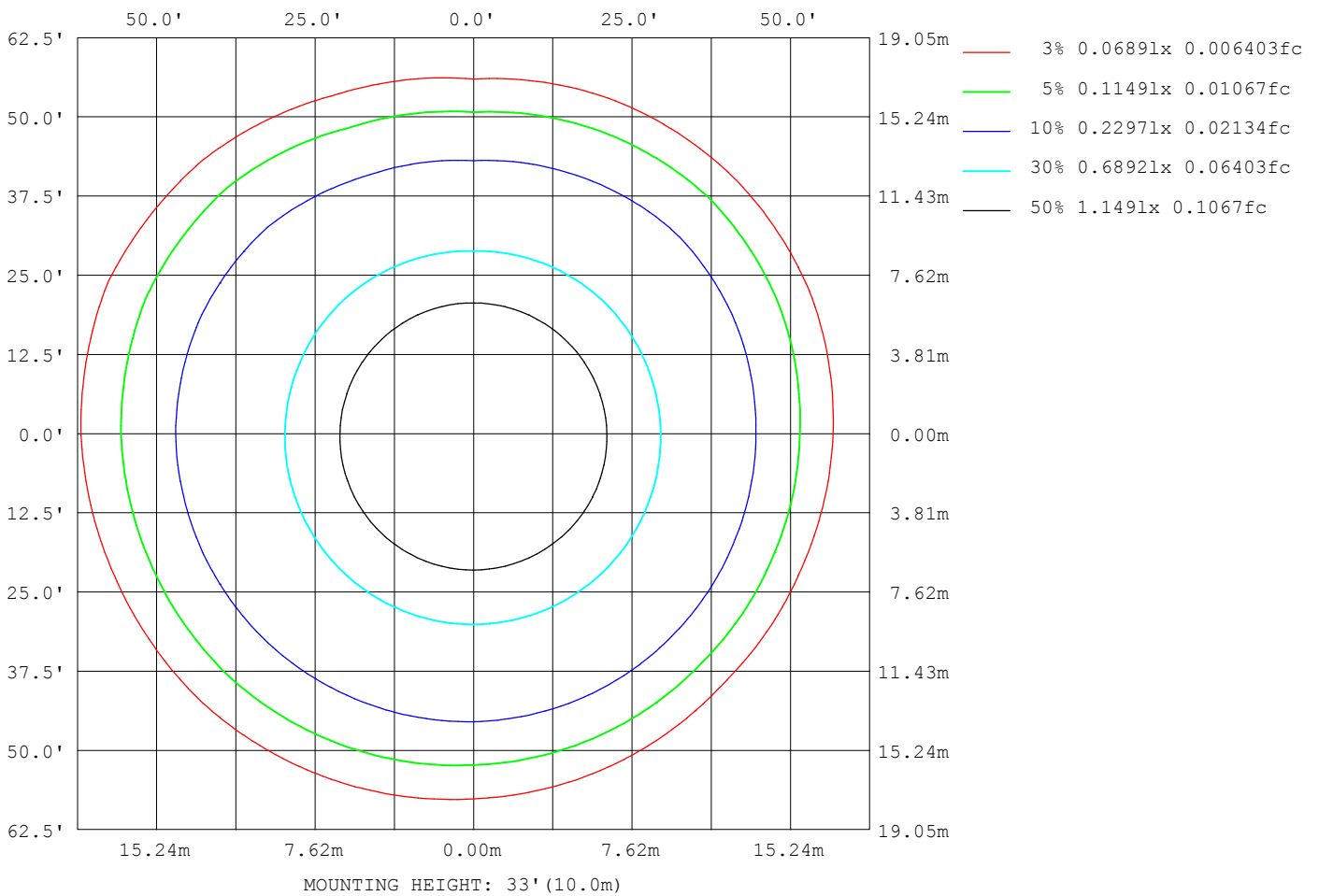
Note:The Curves indicate the illuminated area and the average illumination when the luminaire is at different distance.

C Range: 0 - 360DEG
C Interval: 22.5DEG
Test Speed: HIGH
Temperature:25.2°C
Operators:Dano
Test Date:2023-07-07

γ Range: 0 - 180DEG
γ Interval: 1.0DEG
Test System:EVERFINE GO-R5000_V2 SYSTEM V2.00.459
Humidity:55.3%
Test Distance:2.900m [K=0.8810]
Remarks:

ISOLUX DIAGRAM

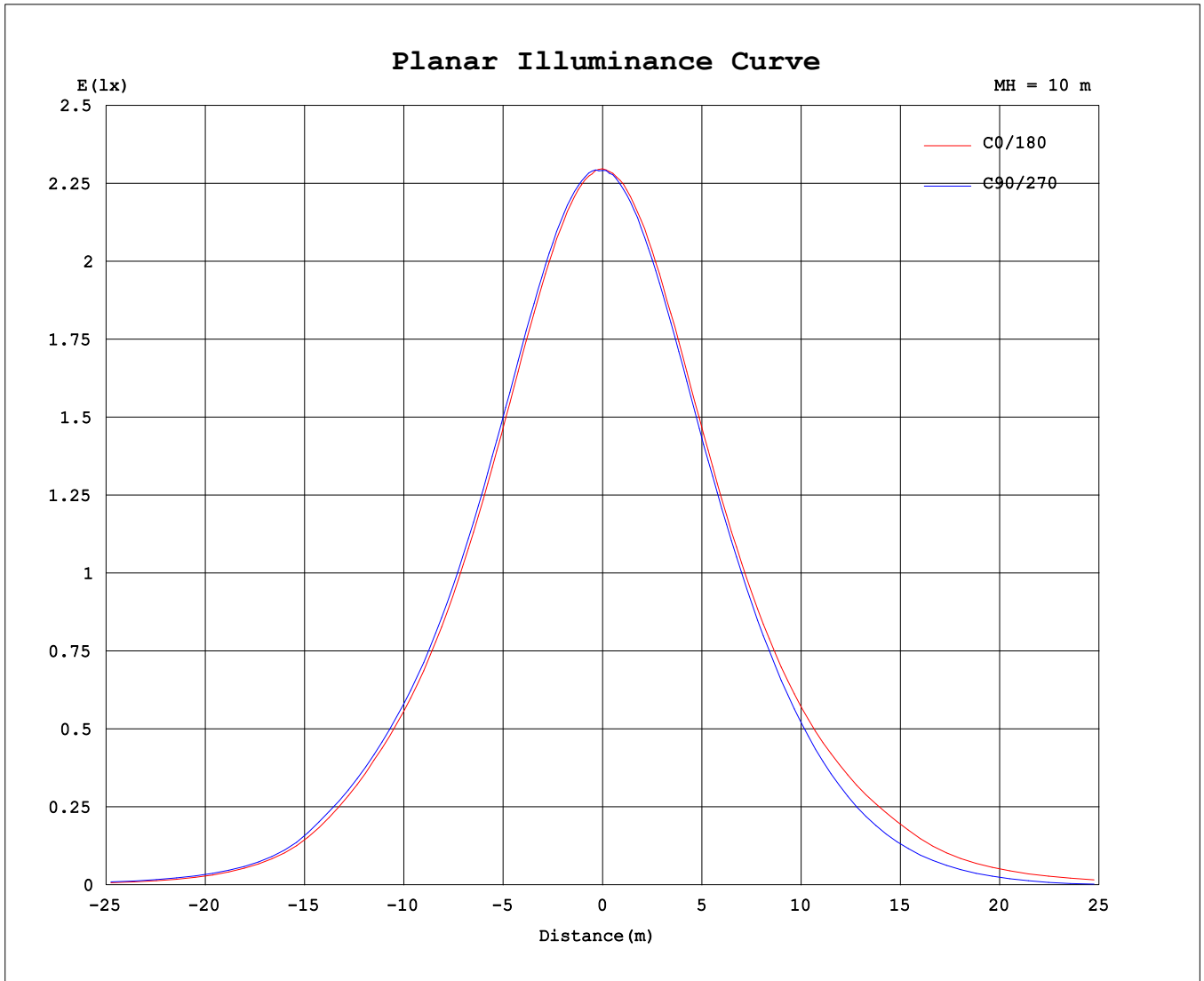
Test:U:120.1V I:0.0811A P:8.778W PF:0.9011 Freq:60.01Hz Lamp Flux:550.442x1 lm		
NAME: LRS-O2-MCT-BR 5000K	TYPE:	WEIGHT:
SPEC.:	DIM.:	SERIAL No.:
MFR.: FOSHAN LEDKEY LIGHTING CO.,LTD.	SUR.:	Shielding Angle:



C Range: 0 - 360DEG
 C Interval: 22.5DEG
 Test Speed: HIGH
 Temperature:25.2°C
 Operators:Dano
 Test Date:2023-07-07

γ Range: 0 - 180DEG
 γ Interval: 1.0DEG
 Test System:EVERFINE GO-R5000_V2 SYSTEM V2.00.459
 Humidity:55.3%
 Test Distance:2.900m [K=0.8810]
 Remarks:

Planar Illuminance Curve



C Range: 0 - 360DEG
C Interval: 22.5DEG
Test Speed: HIGH
Temperature:25.2°C
Operators:Dano
Test Date:2023-07-07

γ Range: 0 - 180DEG
γ Interval: 1.0DEG
Test System:EVERFINE GO-R5000_V2 SYSTEM V2.00.459
Humidity:55.3%
Test Distance:2.900m [K=0.8810]
Remarks:

LUMINOUS DISTRIBUTION INTENSITY DATA

Test:U:120.1V I:0.0811A P:8.778W PF:0.9011 Freq:60.01Hz Lamp Flux:550.442x1 lm		
NAME: LRS-O2-MCT-BR 5000K	TYPE:	WEIGHT:
SPEC.:	DIM.:	SERIAL No.:
MFR.: FOSHAN LEDKEY LIGHTING CO.,LTD.	SUR.:	Shielding Angle:

Table--1

UNIT: cd

C (DEG) γ (DEG)	0	22.5	45	67.5	90	112.5	135	157.5	180	202.5	225	247.5	270	292.5	315	337.5			
0	229	229	229	229	229	229	229	229	229	229	229	229	229	229	229	229			
5	228	229	229	230	230	229	229	229	228	228	228	228	228	227	228	228			
10	226	227	227	228	229	228	227	226	226	225	224	224	224	224	224	225			
15	221	223	224	224	225	224	224	223	221	221	219	219	219	219	219	221			
20	215	217	218	219	220	219	218	217	216	214	213	212	212	212	213	214			
25	208	210	211	212	213	212	211	210	208	206	205	204	204	204	204	206			
30	198	200	202	203	204	203	202	201	198	197	195	194	194	194	195	197			
35	187	189	191	192	193	192	191	189	188	186	184	183	182	183	184	185			
40	173	176	177	179	180	179	178	177	176	174	172	169	167	169	171	172			
45	157	160	162	164	165	165	164	163	161	160	158	152	148	151	156	157			
50	135	137	139	141	143	144	145	146	146	144	140	128	121	127	136	137			
55	97.0	95.9	97.7	103	107	111	117	120	123	121	115	96.4	87.1	94.7	103	102			
60	54.3	50.1	49.4	54.5	59.4	66.7	74.3	77.9	82.7	85.5	77.7	60.0	50.6	56.4	59.7	59.1			
65	24.6	23.2	24.9	28.2	30.4	34.8	38.9	42.1	48.1	50.7	40.9	26.7	18.6	26.0	28.5	29.1			
70	10.2	9.15	10.8	12.4	13.4	14.8	16.6	17.7	23.9	28.2	15.7	2.92	0.84	4.29	12.3	14.1			
75	2.49	1.64	2.35	3.22	2.94	3.43	3.79	2.25	6.44	10.9	0.19	0.10	0.17	0.18	2.15	5.52			
80	0.08	0.20	0.30	0.44	0.52	0.46	0.33	0.20	0.05	0.13	0.04	0.08	0.10	0.12	0.13	0.45			
85	0.06	0.14	0.22	0.33	0.39	0.33	0.22	0.12	0.03	0.03	0.01	0.01	0.01	0.03	0.05	0.08			
90	0.01	0.05	0.11	0.18	0.22	0.17	0.08	0.02	0.00	0.00	0.00	0.00	0.00	0.00	0.01	0.01			
95	0.01	0.01	0.01	0.00	0.00	0.00	0.00	0.00	0.01	0.01	0.01	0.01	0.01	0.01	0.01	0.02			
100	0.01	0.01	0.01	0.01	0.00	0.00	0.01	0.01	0.02	0.02	0.02	0.02	0.02	0.02	0.03	0.03			
105	0.02	0.02	0.02	0.01	0.01	0.01	0.01	0.01	0.04	0.03	0.03	0.03	0.04	0.04	0.04	0.05			
110	0.03	0.03	0.03	0.02	0.02	0.02	0.02	0.02	0.05	0.04	0.04	0.04	0.05	0.05	0.05	0.06			
115	0.04	0.04	0.04	0.03	0.03	0.03	0.03	0.03	0.05	0.05	0.05	0.05	0.05	0.05	0.06	0.06			
120	0.06	0.06	0.05	0.05	0.04	0.05	0.05	0.05	0.06	0.06	0.06	0.05	0.05	0.06	0.06	0.07			
125	0.08	0.08	0.07	0.07	0.07	0.06	0.07	0.07	0.07	0.07	0.07	0.07	0.07	0.07	0.07	0.08			
130	0.09	0.09	0.09	0.09	0.09	0.09	0.09	0.08	0.10	0.09	0.09	0.09	0.09	0.09	0.09	0.10			
135	0.12	0.12	0.11	0.11	0.11	0.11	0.11	0.11	0.13	0.13	0.12	0.12	0.12	0.12	0.12	0.13			
140	0.13	0.13	0.13	0.13	0.13	0.13	0.13	0.13	0.16	0.16	0.15	0.15	0.15	0.15	0.16	0.16			
145	0.15	0.15	0.14	0.14	0.15	0.15	0.14	0.15	0.20	0.19	0.19	0.18	0.18	0.18	0.19	0.20			
150	0.16	0.16	0.15	0.15	0.15	0.16	0.15	0.16	0.23	0.23	0.21	0.20	0.20	0.20	0.22	0.23			
155	0.16	0.16	0.16	0.17	0.17	0.18	0.17	0.17	0.25	0.25	0.24	0.24	0.23	0.22	0.23	0.25			
160	0.17	0.18	0.18	0.18	0.19	0.19	0.18	0.18	0.26	0.26	0.25	0.25	0.25	0.24	0.25	0.26			
165	0.17	0.18	0.19	0.18	0.19	0.19	0.19	0.18	0.26	0.26	0.26	0.25	0.25	0.24	0.25	0.26			
170	0.19	0.19	0.19	0.19	0.20	0.20	0.20	0.19	0.25	0.25	0.24	0.24	0.24	0.24	0.25	0.25			
175	0.20	0.21	0.20	0.21	0.21	0.22	0.21	0.21	0.24	0.24	0.24	0.24	0.24	0.24	0.25	0.25			
180	0.23	0.22	0.22	0.23	0.23	0.24	0.23	0.23	0.23	0.23	0.22	0.22	0.22	0.23	0.23	0.23			

C Range: 0 - 360DEG
 C Interval: 22.5DEG
 Test Speed: HIGH
 Temperature:25.2℃
 Operators:Dano
 Test Date:2023-07-07

γ Range: 0 - 180DEG
 γ Interval: 1.0DEG
 Test System:EVERFINE GO-R5000_V2 SYSTEM V2.00.459
 Humidity:55.3%
 Test Distance:2.900m [K=0.8810]
 Remarks: